

EXTERNAL PPC BLUE'LOG XM / XC

Item no.: 557.013



Configuration and monitoring of external power plant controllers

LICENSE DESCRIPTION

Meteocontrol offers with the blue'Log XM / XC and the VCOM a seamless interaction of power plant control and monitoring. The communication between these devices is getting constantly better.

If blue'Log XC cannot act as the main power plant controller, meteocontrol provides a feature in which the VCOM and blue'Log can still be used as the main monitoring components. "External PPC" gives the possibility to monitor the data from a third-party power plant controller (PPC) with blue'Log and to import it to VCOM. Therefore, it's possible to use the monitoring features in VCOM for Power Control with a third party PPC.

The "557013 External PPC blue'Log XM / XC license" activates the function.

FEATURES

- + Monitoring of a third party PPC with blue'Log and VCOM
- + Available data depends on the used PPC. Possible measurement values can be checked in the [VCOM import specification](#)
- + Possibility to use "VCOM Power Control Loss"
- + Consideration of third-party PCC measurements in VCOM "PR Calculation"

REQUIREMENTS

- + blue'Log XM / XC
- + Firmware \geq 24.3.12
- + Device must be compatible with blue'Log*
- + "557013 External PPC blue'Log XM / XC license"***

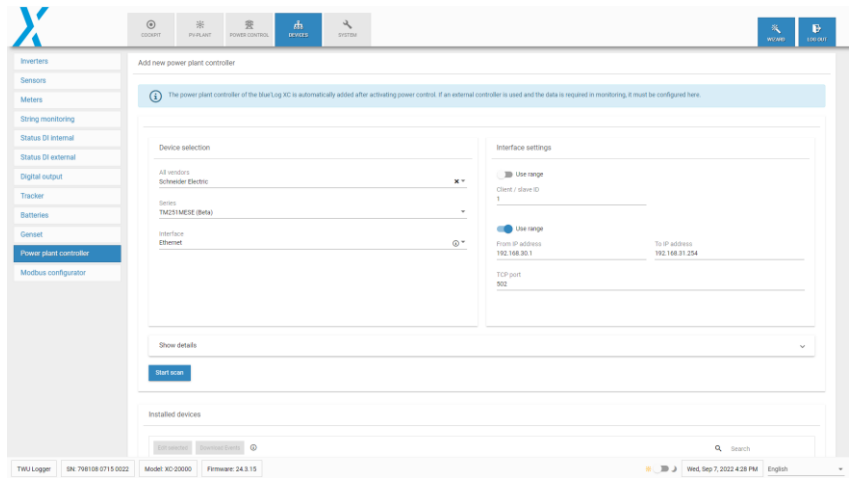
*Please check the Compatibility list on www.meteocontrol.com.

**The license is linked to a specific device. When ordering, please provide the 14-digit hardware serial number of the data logger.

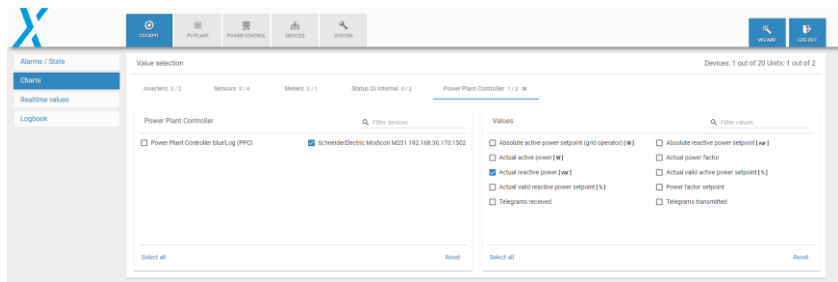
CONFIGURATION

+ Configuration is done in the menu „Devices – Power plant controller“

➤ Choose your device



+ All measurements can be found at the menu “Charts – Power Plant Controller”



Further information: www.meteocontrol.com